

Submitting Placement Test Videos

1. There are four parts to the Placement Test – each with their own due date & submission
 - a. PART 1: Exercises A, B, C, D – due March 10th – **required for everyone**
 - b. PART 2: Lyrical Exercise – due March 31st - *optional for new members for advanced placement consideration, required for all current HS students*
 - c. PART 3: Technical Exercise – due April 21st - *optional for new members for advanced placement consideration, required for all current HS students*
 - d. PART 4: Chromatic Scale and Major Scales – due May 5th - **required for everyone**
2. **While Middle School students can submit videos – we will be coming to hear all of them in person in April/May.** The only assignments required for MS Students are Part 1 and Part 4. Part 2 and 3 should be attempted if interested in membership in the Pride of Sebastian River (competitive marching band).
3. Practice your music BEFORE you video!
4. When you are ready to record, please make sure that you are visible to the camera from at least the waist up. Please make sure what you are wearing meets school dress code and that everything visible to the camera is appropriate for school. Please make sure you are able to see your music while still having good posture! Use a music stand if at all possible!
5. Please only submit ONE video per part.
6. Please watch your video before you submit it to ensure that there are no microphone problems or video problems.
7. **RECORDING PROCESS – THIS SHOULD BE DONE WITH A PARENT OR HELP OF AN ADULT!**

SCRIPT

1. Start recording
2. Student: Before playing each part, state your name, current school, and current grade for each video

Ex. “My name is Joe Smith. I go to Sebastian River Middle and I’m in 8th grade.”
3. For PART 1: Please say “Letter A”, “Letter B” before playing each exercise
4. For PART 2 & PART 3: State what you are playing – or have an adult state what you are playing before playing.
 - a. Ex: Adult says: “Please play your Lyrical Exercise.” Student plays Lyrical Exercise or student says “I will now play my Lyrical Exercise” etc.
5. For PART 4: “Chromatic & Major Scales”, please announce the name of each scale before you play it (in Concert Pitch).
 - a. Say the name of each scale (Concert pitch) before you play it!
 - i. Ex. “Concert F”, “Concert B-flat”, etc.
 - b. SET A 3:30 MINUTE TIMER (three minutes and 30 seconds) and play as many scales (in the order below) as many octaves as possible (as they are written on your scale sheet). Scales played outside of the 3 minutes & 30 second time frame will not be scored.
 - c. Scales should be played in order of the circle of 4th as listed below
 - i. **Chromatic**, G, C, F, Bb, Eb, Ab, Db, Gb, B, E, A, D, any minor scales
 - ii. **MINIMUM REQUIREMENT:** Everyone should play their Chromatic Scale and their Concert F, Concert B-flat, Concert E-flat, and Concert A-flat scales
 - iii. Make sure to play your scales **IN ORDER**
 - iv. Play each scale as many octaves as possible, with arpeggios

8. Uploading video to YouTube

a. Computer

1. Go to YouTube.com
2. Create a YouTube account and channel
3. Sign in
4. Upload your video as an **UNLISTED (not private)** video in **STANDARD DEFINITION**
5. Title your video with your First and Last Name
6. You will receive an e-mail from YouTube (with a link) that your video has been uploaded and is ready to view
 - a. It may take up to 30-45 minutes to receive the e-mail from YouTube

7. Go to srhsband.com and use the Video Audition Submission Form on the Student Info Page to submit your video link

b. Smartphone/Tablet

1. Download YouTube app
2. Create a YouTube account
3. Sign-in to the YouTube app
4. Go to the video in your phone/table (usually in “videos” or “camera roll”)
5. Send it (usually a square with the arrow pointing up on apple devices) to the YouTube app
6. Title your video with your First and Last Name
7. Upload your video as an **UNLISTED (not listed)** video in **STANDARD DEFINITION**
8. You will receive an e-mail from YouTube (with a link) that your video has been uploaded and is ready to view
 - a. It may take up to 30-45 minutes to receive the e-mail from YouTube

9. Go to srhsband.com and use the Video Audition Submission Form on the Student Info Page to submit your video link

Exercises A - D

Horn in F

A



B



C



D



First system of a piano score. The right hand features a melody of eighth notes, and the left hand provides a bass line. A dynamic marking of *f* is present at the beginning.

Second system of the piano score. The right hand continues the eighth-note melody. A dynamic marking of *ff* is placed above the staff.

Third system of the piano score, concluding the first section.

HORNS LYRICAL, TOP LINE, NO REPEAT

Andantino $\text{♩} = 80$

BERR

Fourth system, marked with a large number '7' on the left. It begins with a piano (*p*) dynamic. The right hand has a melodic line with slurs, and the left hand has a rhythmic accompaniment.

Fifth system of the piano score. It features a repeat sign in the middle. Dynamics of *f* and *mf* are indicated.

Sixth system of the piano score, ending with a repeat sign.

HORNS TECHNICAL

CARNAUD

Allegro $\text{♩} = 104$

3

mf

Fine

p

D.C. al Fine

SCHANTL

Agitato

4

f

f

p

mf

f

ff

Horn

12 Major Scales

West Orange High School Band

D Major (G Concert)



G Major (C Concert)



C Major (F Concert)



F Major (Bb Concert)



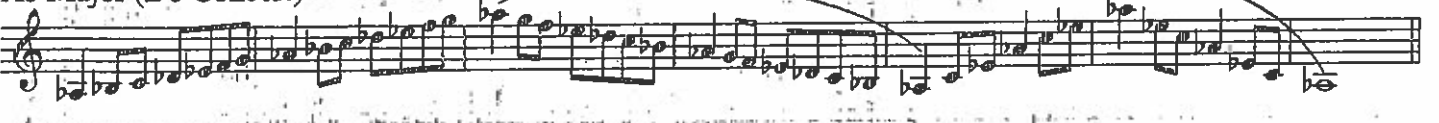
Bb Major (Eb Concert)



Eb Major (Ab Concert)



Ab Major (Db Concert)



Db Major (Gb Concert)



F# Major (B Concert)



B Major (E Concert)



E Major (A Concert)



A Major (D Concert)

